

WILLOW

GARDEN APARTMENTS



*The beauty of nature meets sophisticated design,
to create a luxurious retreat from the everyday.*



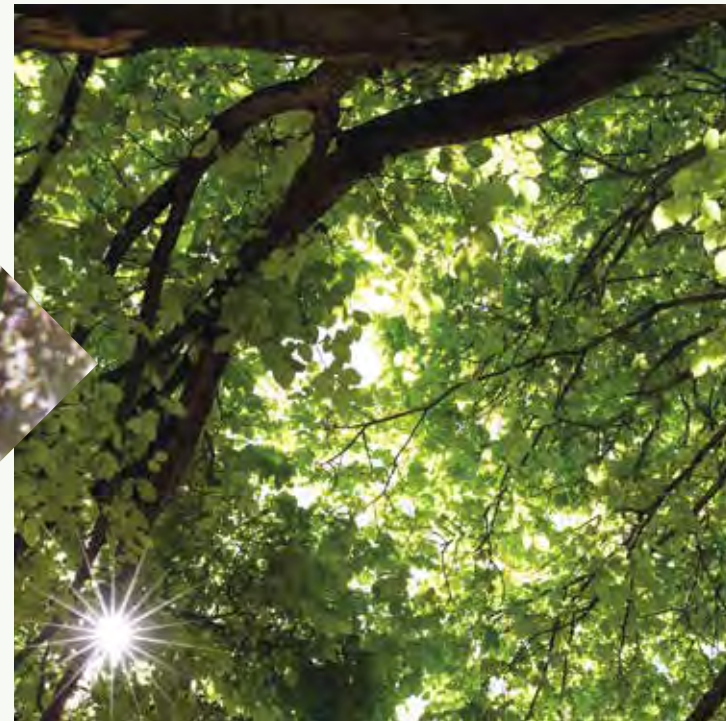


Uncover a life of pure elegance.





ARTIST IMPRESSION



EXCLUSIVE DESIGNER RESIDENCES

Hidden within the natural beauty of Surrey Hills are Willow garden apartments, 33 boutique, luxury residences.

Designed to blend with the existing landscape, the architecture is modern yet timeless. Taking advantage of its enviable parkside location, Willow uses natural materials and tones to blur the divide between building and park, creating private, leafy residences.

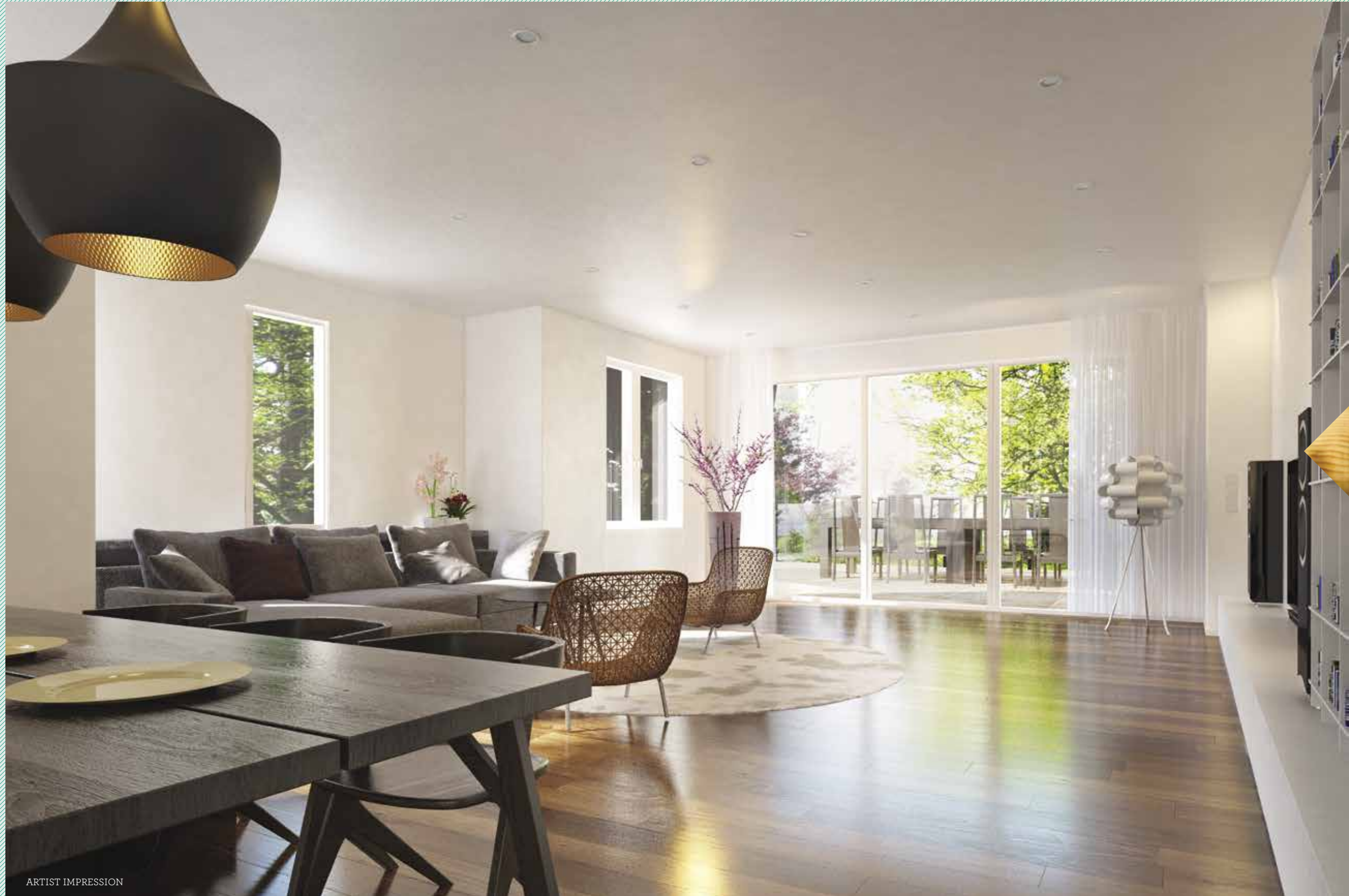
With only two expansive apartments per level and the convenience of private outdoor entertaining, Willow offers an outstanding level of luxury in a secluded haven.

SECLUDED GARDEN LIVING

Willow's discreet, low rise design blends in perfectly with the established residences of Surrey Hills. The residences are separated into six individual buildings, allowing for large areas of open space.

Each building houses only 2 apartments per floor for maximum privacy and there is a choice of garden or terrace apartments available. Willow offers spacious, convenient living in an outstanding, exclusive parkside location.





ARTIST IMPRESSION



LUXURY LIVING

Inside each residence expansive open plan living areas give each home a unique, relaxed flow. Large floor-to-ceiling windows ensure an abundance of natural light, as well as providing magnificent park views.

Each residence has a large terrace or garden that also acts as an additional room. These spaces are ideal for entertaining family and friends, or simply relaxing and enjoying the leafy surrounds.



ARTIST IMPRESSION



ARTIST IMPRESSION

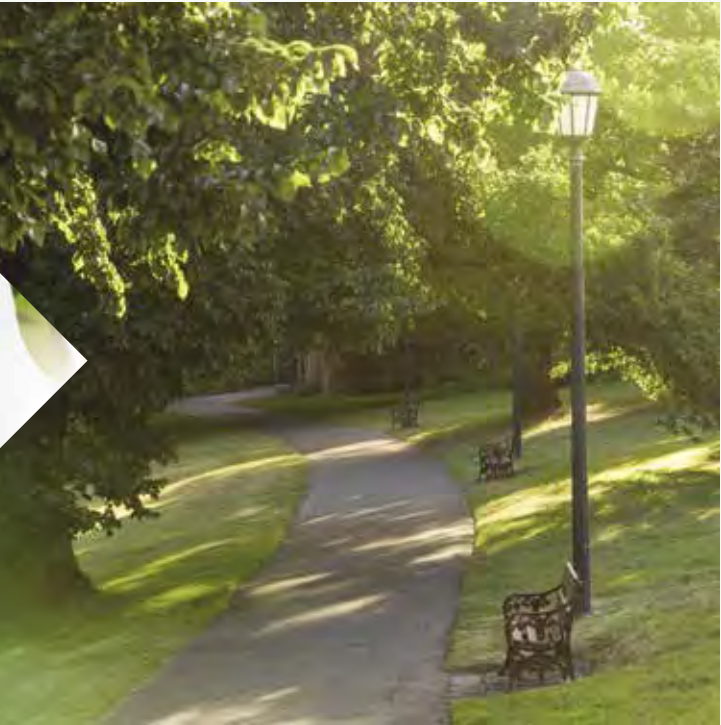
FINEST QUALITY FINISHES

Throughout the apartments the quality of the fittings and finishes is clearly evident. The kitchen features stone bench tops and European appliances, while the bathroom is finished with premium tiles and chrome tapware.

Willow offers a choice between two interior colour schemes; a muted, yet elegant light scheme, or a bolder, more dramatic dark palette.

*Choose a life that is out of the ordinary.
The tranquillity of your own secret garden,
minutes from all the delights of Surrey Hills.*





IDEALLY LOCATED

Although secluded, Willow is close to all the local amenities. There's strip shopping around the corner on Riversdale Road and Union Road, and the restaurants, boutiques and cafés of iconic Maling Road are minutes away. A short drive takes you to Camberwell and Box Hill shopping centres.

You're surrounded by parks and gardens, including Surrey Gardens and the huge expanse of Wattle Park, and there are plenty of delightful walking and cycling tracks.

Getting around could not be more convenient with the city tram stopping just metres from your door, Surrey Hills train station ia also nearby and the Eastern Freeway is only minutes away.

THE TEAM

Developer



The Ever Bright Group and their subsidiaries are involved in major property development all over the world. The company has developed a number of successful residential and commercial projects in Australia, the Middle East and Asia covering more than 3 million square metres and including developments such as the Victoria Times and Victoria Gardens in Hebei and Beijing, Villiers Apartments, Stonington Terraces, Norfolk Apartments, Lucia South Yarra and many others.

With a five star approach to every project, Ever Bright aims for a harmonious blend of architecture and design, bringing together the best in their fields for all collaborations. The result: award-winning residences that appeal to the most discerning of buyers around the globe.

www.ebg.net.au



Architect



Interlandi Mantesso Architects was founded in Melbourne in 2003 - bringing together over thirty-five years experience of creating and crafting environments.

The practice's portfolio is characterised by legibility, innovation and a rigorous approach to design. The buildings are designed to have spatial and organisational clarity to reflect the activities within them.

IMA's dedication to place-making architecture is paramount, regardless of budget. This level of design excellence has placed the practice at the forefront of the building and property industry.

IMA believes in creating environments for the celebration of living, working and playing.

www.imaarchitects.com.au

Landscaper



John Patrick Pty. Ltd. is one of Melbourne's leading specialist Landscape Architecture Practices with over 30 years of experience providing Landscape Architecture services to the private sector, local government and state government.

The practice comprises 16 landscape Practitioners with diverse experience including extensive work for the City of Sydney for the 2000 Olympics, ongoing work for major local government organisations including City of Melbourne and the City of Glen Eira and, in recent years, ongoing work as a Landscape Witness at VCAT and Panel Hearings. In this area our reputation and experience is second to none.



willowsurreyhill.com.au



Leonard Teplin 0402 431 657
Mark Dayman 0409 342 462